

## HARDWARE

Onboard DPDT Relays 4

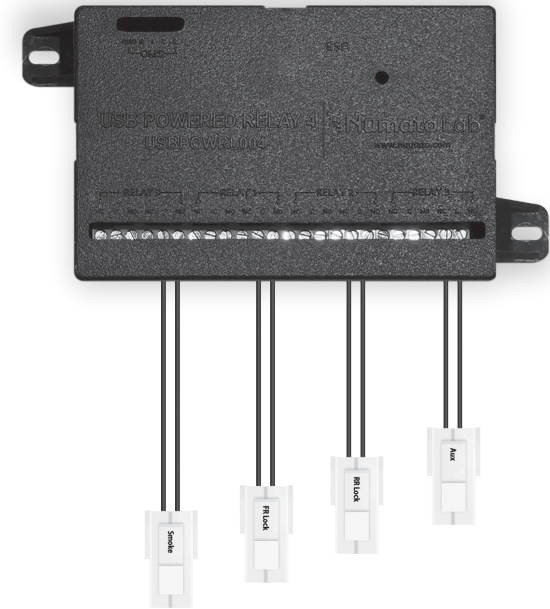
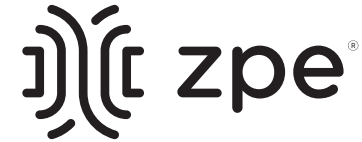
Supply Power Requirements 5V via USB cable

Contact Rating 1A/ 120V AC / 2A/ 24V DC  
Maximum Switching Current

Cable Included. Detached. USB Mini B to USB Type A.  
3 meters (10 feet)

## DESCRIPTION

Automate control of your equipment and sensors with this easy-to-use 4-port relay module. Connect to Nodegrid USB port, and relay simple commands to devices . Control and read relay status with CLI, Web, SNMP or Restful APIs.



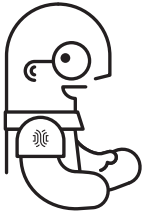
# Quick Install Guide

## 4-Channel Relay Module (USB)

ZPE-RL4-U01

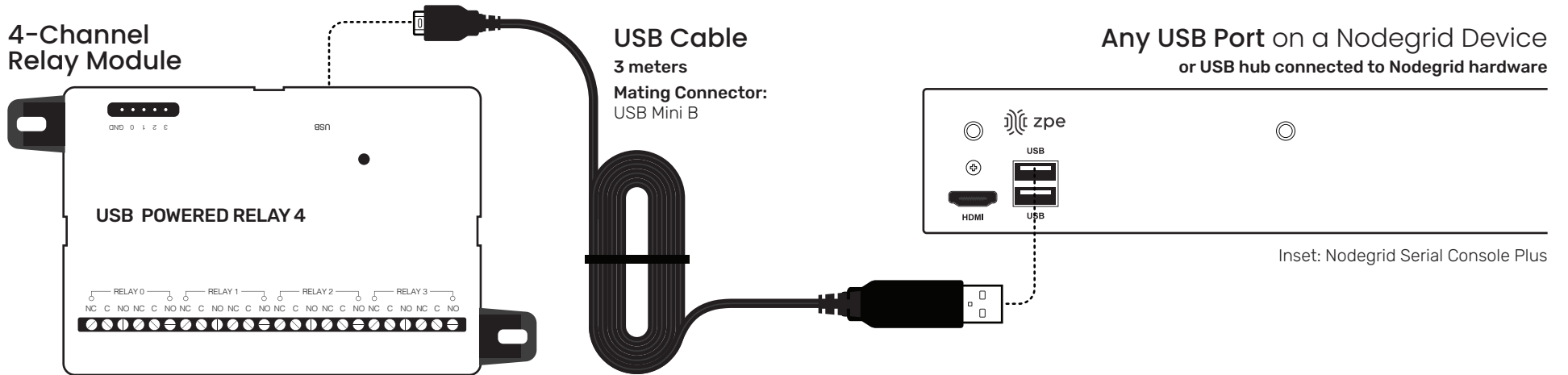
COMPATIBLE WITH  
ALL NODEGRID DEVICES

**ZPESYSTEMS.COM**

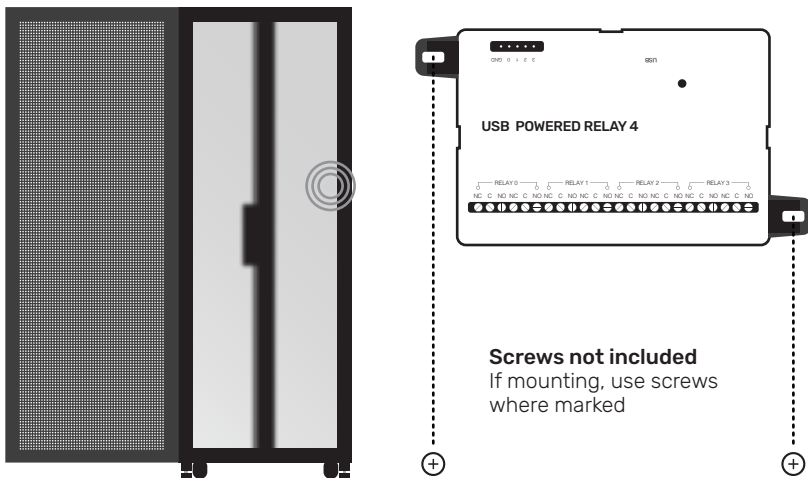


# Let's set up your 4-Channel Relay Module

- 1 Connect the module to any available USB 2.0 or USB 3.0 port on Nodegrid Serial Consoles, Services Routers, or USB hubs connected to Nodegrid hardware.



- 2 Mount module by screwing it on a surface where wires can run through. You may also use mounting tape.



- 3 Ensure minimum Nodegrid OS version meets module requirements. Upgrade Nodegrid OS to minimum version 5.4.1



nodegridos

- 4 For more information, visit the "Sensor Quick Install Guide" section at: <https://www.zpesystems.com/user-manuals/>



- 5 OPTIONAL: To configure data collection in ZPE Data Lake, refer to Appendix C in the latest ZPE Cloud Manual at: [zpesystems.com/user-manuals/](https://www.zpesystems.com/user-manuals/)

We suggest placing the product here \*Rack cage may be a different model or size